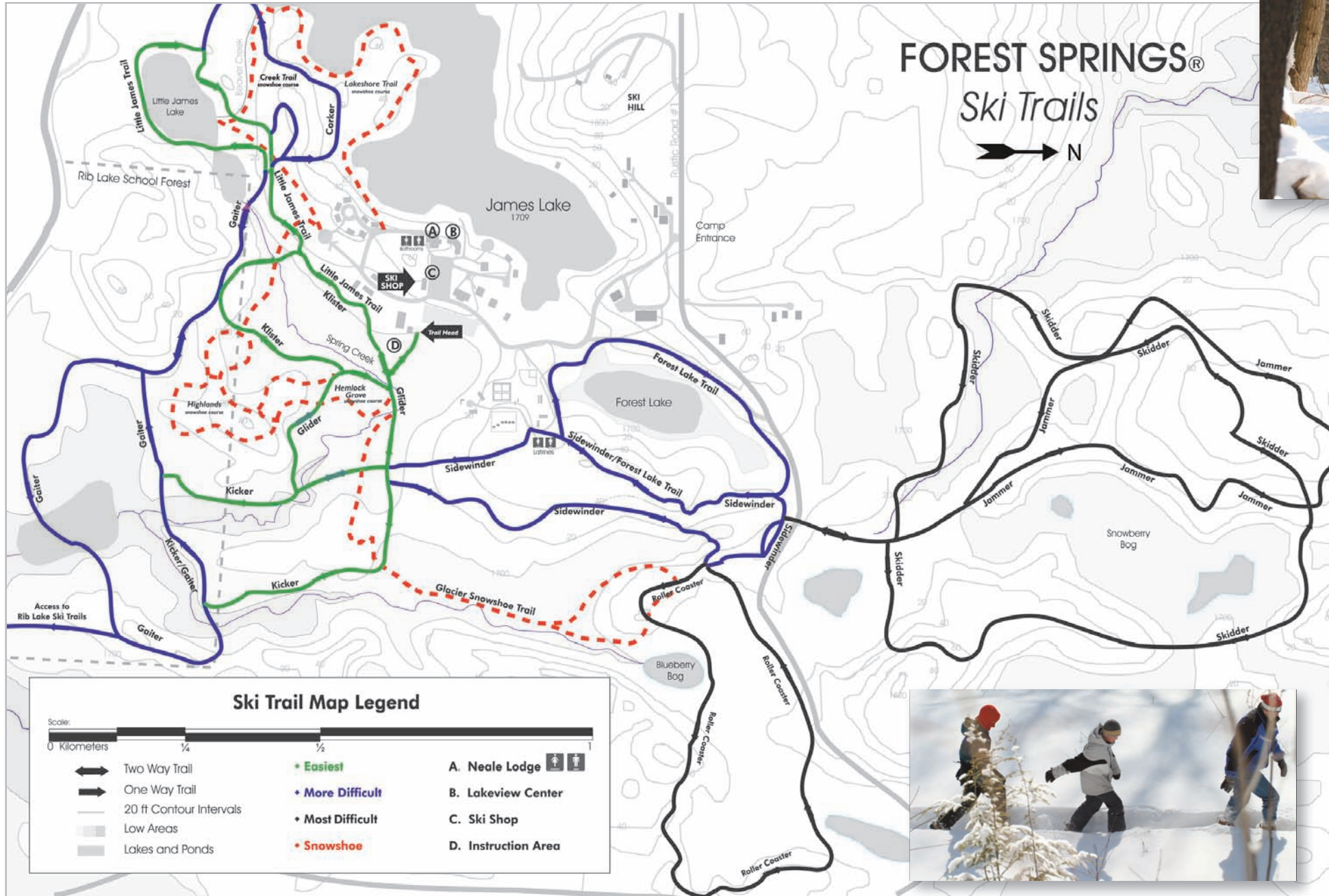


Trail Guide

All trails are groomed for classic & skating skiing



FOREST SPRINGS®

Ski Trails



XC Skiing

	Classic	Skating	Loop Distance
Easiest Trails (green signs)			
Glider	✓	✓	.8 km
Kicker	✓	✓	1.1 km
Little James	✓	✓	1.6 km
Klister	✓	✓	.8 km

More Difficult Trails (blue signs)			
Sidewinder	✓	✓	1.6 km
Forest Lake	✓	✓	1.2 km
Corker	✓	✓	1.1 km
Gaiter	✓	✓	2.4 km
Rib Lake Access	✓	✓	.4 km

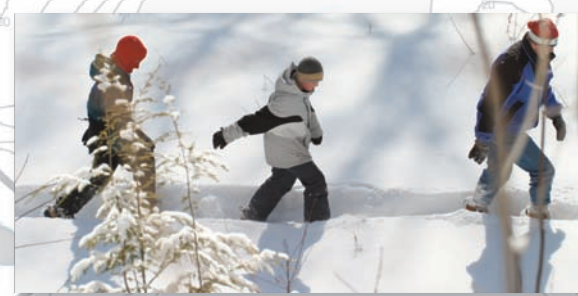
Most Difficult Trails (black signs)			
Skidder	✓	✓	2.3 km
Roller Coaster	✓	✓	1.6 km
Jammer	✓	✓	1.7 km

Note: 1 Kilometer = .62 miles



Please refrain from walking on ski trails and roads.

Trails	Distance
Hemlock Grove	.3 km
Highlands	1.1 km
Glacier	2.2 km
Lakeshore Trail	.9 km
Creek Trail	.8km



Ski Trail Map Legend

Scale: 0 Kilometers 1/4 1/2 1

- Two Way Trail (double arrow)
- One Way Trail (single arrow)
- 20 ft Contour Intervals (dashed line)
- Low Areas (light grey shading)
- Lakes and Ponds (blue shading)
- Easiest** (green line)
- More Difficult** (blue line)
- Most Difficult** (black line)
- Snowshoe** (red dashed line)
- A. Neale Lodge (up/down arrows)
- B. Lakeview Center (up/down arrows)
- C. Ski Shop (shopping bag icon)
- D. Instruction Area (up/down arrows)